

**Compact —  
Precision measurement station.**

## FEATURES

Precision metrology instrument providing excellent affordability with maximum capability to get fast results.

### Hardware

- Solid, cast aluminum base and column with precision stages
- 6 x 3 x 5 inches XYZ travel
- Precision adjustment knobs for positioning & focus
- X,Y & Z axis measurement
- 0.00004" (1 $\mu$ m) scale on the X,Y & Z axis
- Accurate dimensional measurement to better than 0.0002 inches

### Optics & Illumination

- High resolution color camera and motorized zoom optics provide a crystal clear image
- Magnification ranges from 34X to 176X
- LED ring light and back light, and optional square-on coaxial illumination

### Software

- ROI eGx metrology software for manual systems
- Advanced image processing capability with automatic edge trace and multiple field of view tools
- Powerful editing tools for quick program changes
- Single or dual monitor operation
- Y14.5 compliant measurement software for manual or operator assisted measurement



StarLite GX with eGx metrology software, optional front panel, computer, LCD monitor, keyboard and mouse.

## MEASUREMENT SYSTEM

### StarLite GX— Ergonomic Controls At Your Fingertips

The StarLite™ GX is a measurement system designed for ease of use, with innovative full feature metrology software.

The robust design guarantees accurate results for even the most demanding metrology applications. The high resolution color camera, superior optics and advanced software delivers the performance you have been looking for in a tabletop system.

#### Intuitive Metrology Software

eGx metrology software provides a full feature set of functions for general purpose dimensional measurement, with an easy-to-use graphical interface. Measure features of interest or create complete inspection programs. eGx guides users through measurement routines with innovative graphical icons and symbols. Unique tools like Compufocus™ ensure accurate, repeatable Z axis measurement by any user.

#### Measurement Capability

StarLite GX substantially increases your inspection measurement productivity. Front panel illumination and magnification controls optimize lighting and image size. Full-featured measurement software guarantees you have the tools needed to measure the most difficult workpiece.

#### Precision Zoom Optics

The motorized 6.5 to 1 zoom lens has superb image quality. The optional front-panel rocker switch makes magnification changes easy. Magnification range of 34X–176X and in excess of 600X with the optional Optical Accessory Kit.

#### Precision Staging

Proven mechanical bearing XYZ stages with ergonomic controls simplify part positioning and focusing on a part. Precise 0.00004 inch scales in the X,Y and Z axis, ensure accurate and repeatable measurements.

#### LED Illumination

StarLite GX includes the patented VectorLight™ ring light, with its concentric rings of pure white light LEDs for clear illumination. The LED back light ensures maximum edge detection for all your application needs. Coaxial (square-on) illumination is also available as an option.

## TECHNICAL SPECIFICATIONS

### Metrology Platform

XYZ Travel, in. (mm)	6 x 3 x 5 (150 x 75 x 125)
XYZ Platform Dimensions, in. (mm)	17.75 x 21.75 x 30 (451 x 552 x 762)
Weight, approximate	60 lbs/27 kg

### Stage Features

Mechanical bearings, Coarse/Fine XY adjust, Front base mounted Z adjust

### Camera

High resolution color camera

### Illumination

White LED VectorLight ring light | White LED back light

Optional Illumination

LED surface illuminator with front panel controls

### Zoom Lens

6.5:1 motorized

Working Distance

2.75"

Magnification on 20" LCD monitor

34X to 176X

Field of View (FOV), in. (mm)

0.070" to 0.35" (1.8 to 8.9)

Optional Add-on Lenses

0.5X | 0.75X | 1.5X | 2.0X

### Scale Resolution, in. (mm)

0.00004" (1.0 μm) X,Y,Z

### Load Capacity

15 lbs/7 kg

### Hardware

Computer

Minimum Pentium® IV with Microsoft® Windows™ XP

Optional Controls

Front panel with motorized zoom control, XYZ zero set, Enter point button, Skew alignment, Inch/millimeter switchable

Optional Accessories

Dust Cover | Foot Switch | Optical Accessory Kit  
Manual Indexer | NIST Traceable Linear Scale

### Software

Standard Measurement Software

eGx metrology software

Optional Software Packages

SmartReport® Plus | MeasureFit®

### Temperature

Safe Operating

41°F -104°F/5°C - 40°C

Machine Specifications

68°F ± 2°F/20°C ± 1°C

### Power Requirements

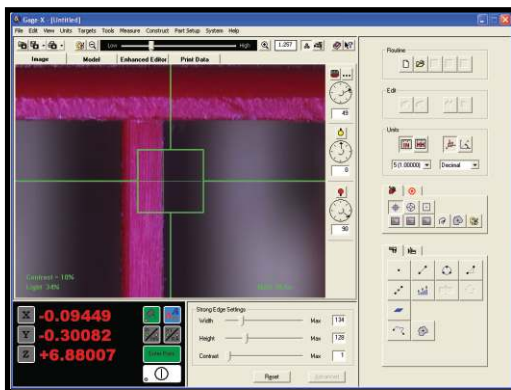
100-240 VAC±5%, 50/60 Hz, 1Φ, 300 W

### Performance

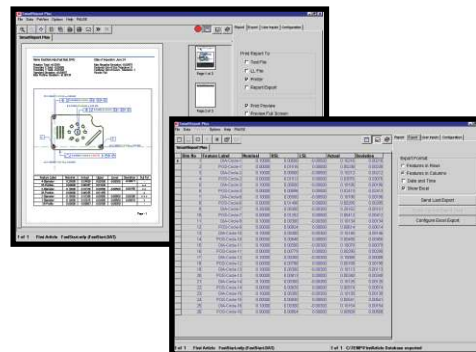
X,Y Linear Accuracy

$E_1 = (180 + 10L) \mu\text{inch}$

Where 'L' is travel in inches. 1 μinch=0.000001 inches. Applies to thermally stable system in rated environment, maximum zoom lens setting, and evenly distributed 10 lb load.



eGx metrology software



SmartReport Plus

RAM OPTICAL INSTRUMENTATION, INC.  
1175 NORTH STREET ♦ ROCHESTER, NY 14621  
SALES & SERVICE 585-758-1300 ♦ SUPPORT 877-764-6397 ♦ FAX 585-506-4307

Visit [www.ramoptical.com](http://www.ramoptical.com) for more information or email [sales@ramoptical.com](mailto:sales@ramoptical.com)

